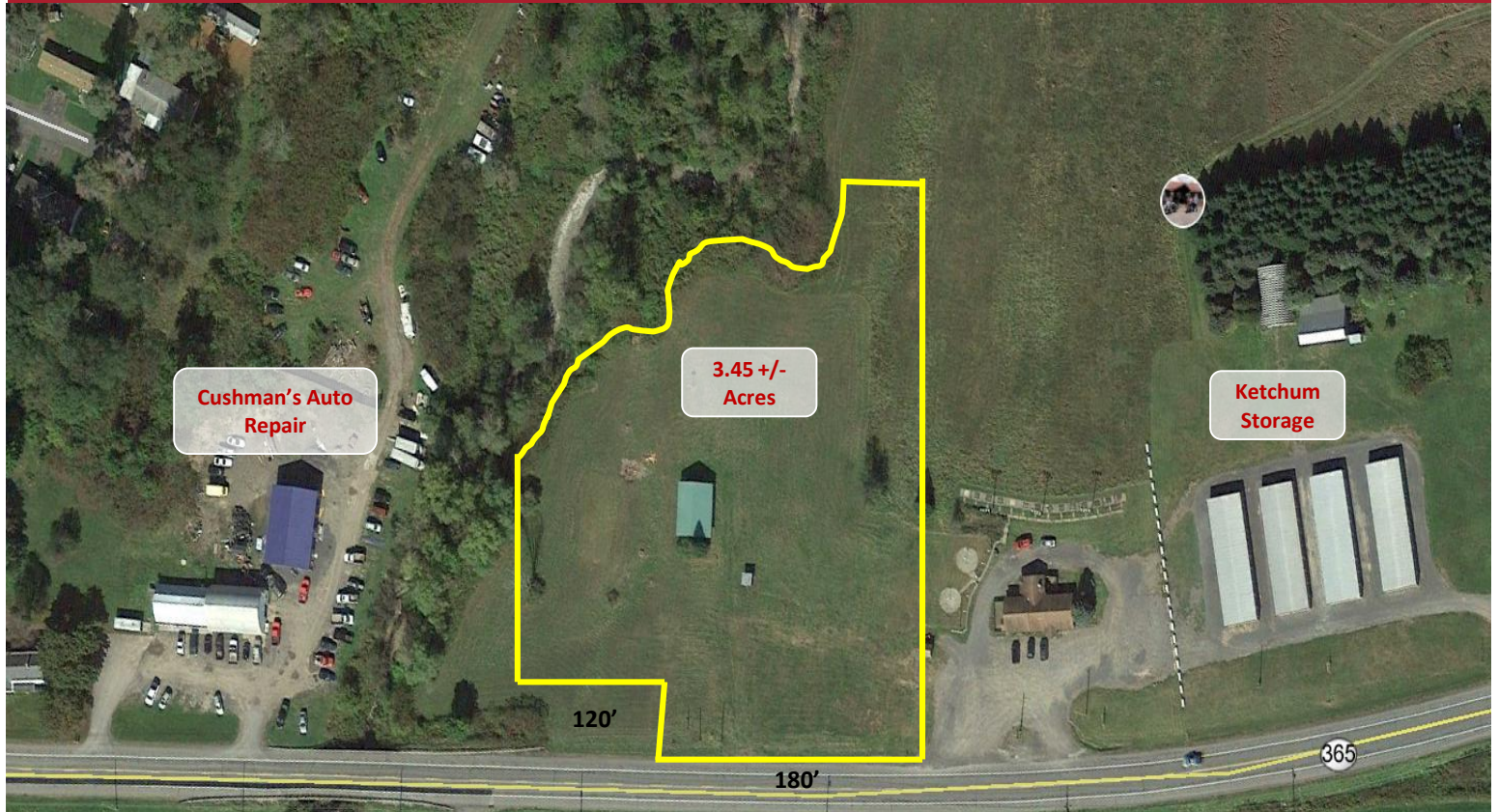


# FOR SALE

Route 365, Floyd, New York



COMMERCIAL REAL ESTATE SALES | LEASING | CONSULTING | DEVELOPMENT | MANAGEMENT



## PROPERTY HIGHLIGHTS

Adjacent to Priscilla's Place Diner is 3.45 +/- acres of commercial land with a pavilion. 181' +/- of frontage on Route 365. The property consists of portions of three tax parcels and will be determined in the sale process.

## KEY FEATURES

- ❑ 3.45 +/- Acres
- ❑ 181' +/- of Frontage



John N. Jweid  
Licensed Associate Real Estate Broker  
315.736.1555 x301  
[jjweid@PaviaRealEstate.com](mailto:jjweid@PaviaRealEstate.com)



5 Oxford Road  
New Hartford, New York 13413

151 Northern Concourse  
Syracuse, New York 13221

[PaviaRealEstate.com](http://PaviaRealEstate.com)

# FOR SALE

Route 365, Floyd, New York



COMMERCIAL REAL ESTATE SALES | LEASING | CONSULTING | DEVELOPMENT | MANAGEMENT

Address:	State Route 365	Cross Street:	Soule Road
City:	Floyd	Roof Type:	Metal
State:	New York	Zoning:	Commercial-1
Zip:	13354	Total Assessment:	TBD
County:	Oneida	RE Taxes:	TBD
Tax ID:	226.000-1-63,64 & 65	CAM:	N/A
Lease Type:	N/A	Space is Currently:	Vacant
Lease Price:	N/A	No. of Floors:	1
Sale Price:	\$84,900.00	Bldg. Total SF:	1,264 +/-
Year Built:	1996	Available SF:	1,264 +/-
Parking Spaces:	TBD	Pavilion:	1,200 +/-
Land Size/Dimensions:	3.45 +/-	Office:	N/A
Electricity/Amps:	TBD	Warehouse:	N/A
Gas Type:	Natural Gas	Other:	64 +/- Shed
HVAC:	N/A	Loading Facilities:	N/A
Elevator:	N/A	Ceiling Height:	N/A
Sprinkler:	No	Traffic Count:	N/A
Water:	Well	Sewer:	Septic



5 Oxford Road  
New Hartford, New York 13413

151 Northern Concourse  
Syracuse, New York 13221

PaviaRealEstate.com