

FOR LEASE | DEVELOPMENT OPPORTUNITY

8521 Seneca Turnpike, New Hartford, New York



COMMERCIAL REAL ESTATE SALES | LEASING | CONSULTING | DEVELOPMENT | MANAGEMENT



PROPERTY HIGHLIGHTS

- ◆ Located on major retail corridor
- ◆ Situated on 1.51 acres
- ◆ High traffic and visibility
- ◆ Owner will sub-divide

[READY TO MAKE A DEAL? CLICK HERE NOW!](#)



Dominic Pavia, President
Licensed Real Estate Broker
315.736.1555 x300 Office
DPavia@PaviaRealEstate.com



Kevin Valenti
Licensed Real Estate Salesperson
315.736.1555 x303 Office
Kvalenti@PaviaRealEstate.com



5 Oxford Road
New Hartford, New York 13413

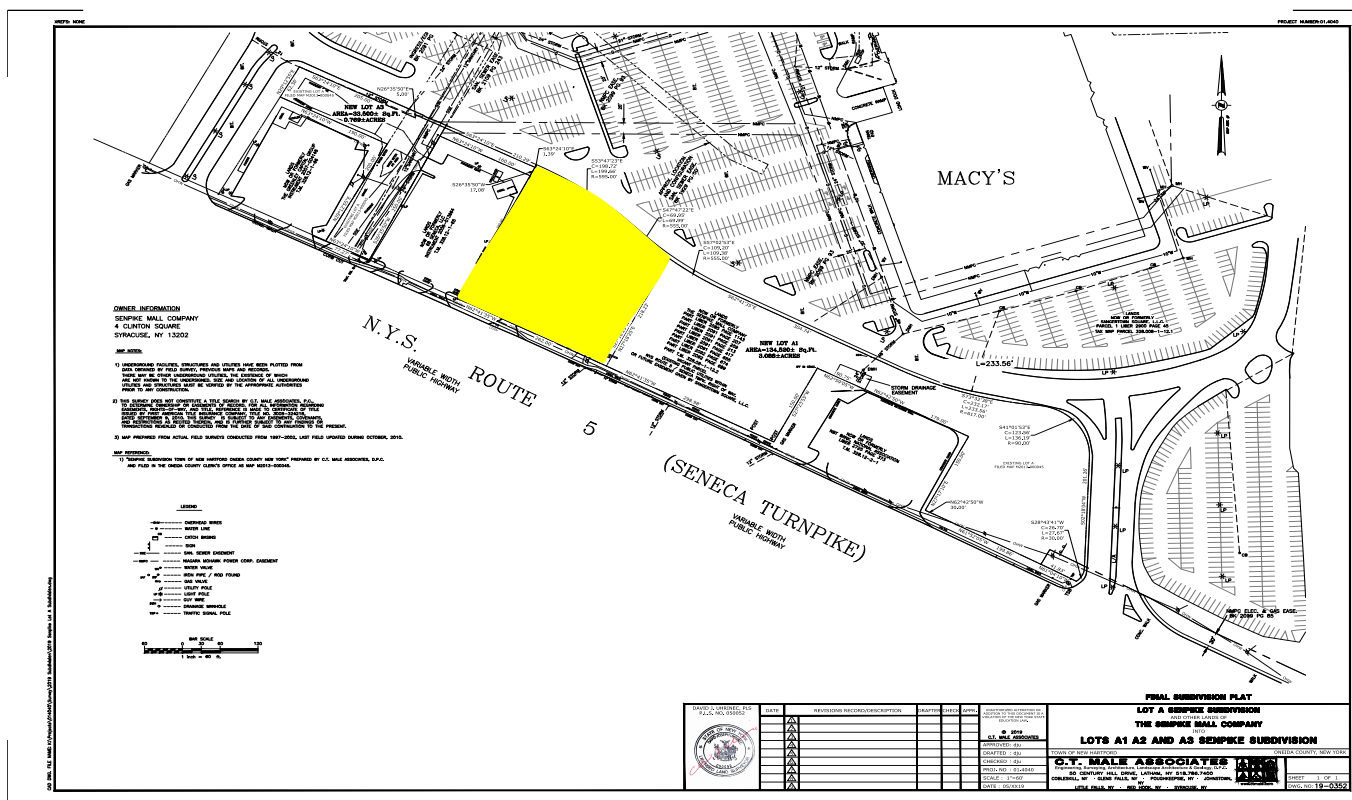
151 Northern Concourse
Syracuse, New York 13221

PaviaRealEstate.com
MAIN: 315.736.1555

8521 Seneca Turnpike, New Hartford, New York



COMMERCIAL REAL ESTATE SALES | LEASING | CONSULTING | DEVELOPMENT | MANAGEMENT

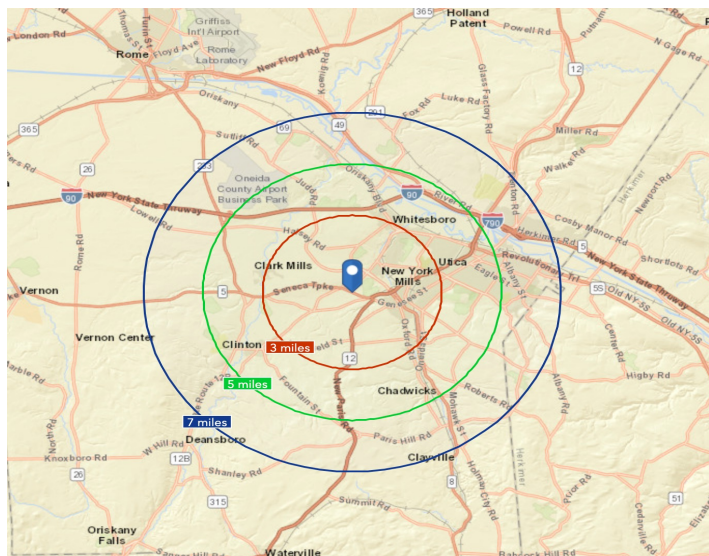


LATITUDE

43.08017

LONGITUDE

-75.31853



DEMOGRAPHICS

By Radius	3 Mile	5 Mile	7 Mile
Population	35,307	89,446	124,994
Households	15,301	36,685	49,268
Median HH Income	\$59,278	\$46,904	\$46,968
Daytime Population	45,034	103,269	141,509
Businesses	1,588	3,531	4,423
Employees	28,777	57,846	77,700

SOURCE: ESRI Report 6/25/2019

TRAFFIC COUNTS

Roadway	Volume Count
Seneca Turnpike	24,750 AADT
Seneca Turnpike, New York 13221	MAIN: 315.736.1555



5 Oxford Road
New Hartford, New York 13413

151 North Seneca Turnpike
Syracuse, New York 13221

MAIN: 315.736.1555

All information furnished, regarding property for sale, rental or financing is from sources deemed reliable, but no warranty or representation is made as to the accuracy thereof and same is submitted subject to errors, change of price, rental or conditions prior sale, lease or financing or withdrawal without notice

FOR LEASE | DEVELOPMENT OPPORTUNITY

8521 Seneca Turnpike, New Hartford, New York



COMMERCIAL REAL ESTATE SALES | LEASING | CONSULTING | DEVELOPMENT | MANAGEMENT

PROPERTY OVERVIEW

Legal Address:	8521 Seneca Turnpike New Hartford, New York 13413 Oneida County
Nearest Cross Street:	Oakdale Avenue
Tax Parcel ID:	328.12-1-67 & 328.12-1-64
Proximity to Highway:	Rt. 5, 8 & 12
Public Transportation Access:	Yes
Parcel Size / Frontage	1.51 ± acres / 192'
Parking Spaces	TBD
Year Built/ Last Renovated	N/A
Total Building Area:	65,740 ± SF
Available Space:	1.51 ± acres
HVAC:	N/A
Sprinkler System:	N/A
Utilities:	At Street
Signage:	Yes
Ceiling Height:	N/A
Loading Facilities:	N/A
Zoning:	General Commercial
Lease Rate:	TBD
Lease Type:	N-N-N
CAM/INS/RE TAXES	Tenant



5 Oxford Road
New Hartford, New York 13413

151 Northern Concourse
Syracuse, New York 13221

PaviaRealEstate.com
MAIN: 315.736.1555