

FOR LEASE | RETAIL ENDCAP SPACE

3065 Erie Boulevard East, Syracuse NY 13224



COMMERCIAL REAL ESTATE SALES | LEASING | CONSULTING | DEVELOPMENT | MANAGEMENT



Laurence J. Socia, CLS
Licensed Associate Real Estate Broker
315.345.5600 mobile
lsocia@PaviaRealEstate.com

PROPERTY HIGHLIGHTS

Known As:	Endcap at Bruegger's Bagels Building
Store Size:	2,078 ± SF
Parcel Size:	0.24± acre corner lot
Parking Spaces:	45 ± vehicles shared
Zoning Class:	Industrial 'IA' – City of Syracuse
Signage:	Storefront, sides, and pylon
Lease Rate:	\$ 24.50 sf
Lease Type:	N-N-N
CAM/Ins/RE Taxes:	\$ 6.65 sf for RE taxes / shared CAM

Comments: Former cell phone store next to national bagel chain. Marquee storefront location features showroom with security grated windows. Situated at busy traffic signal at highway interchange offramp. 43,000± VPD on prime retail corridor.

READY TO MAKE A DEAL? CLICK HERE NOW!



5 Oxford Road
New Hartford, New York 13413

151 Northern Concourse
Syracuse, New York 13221

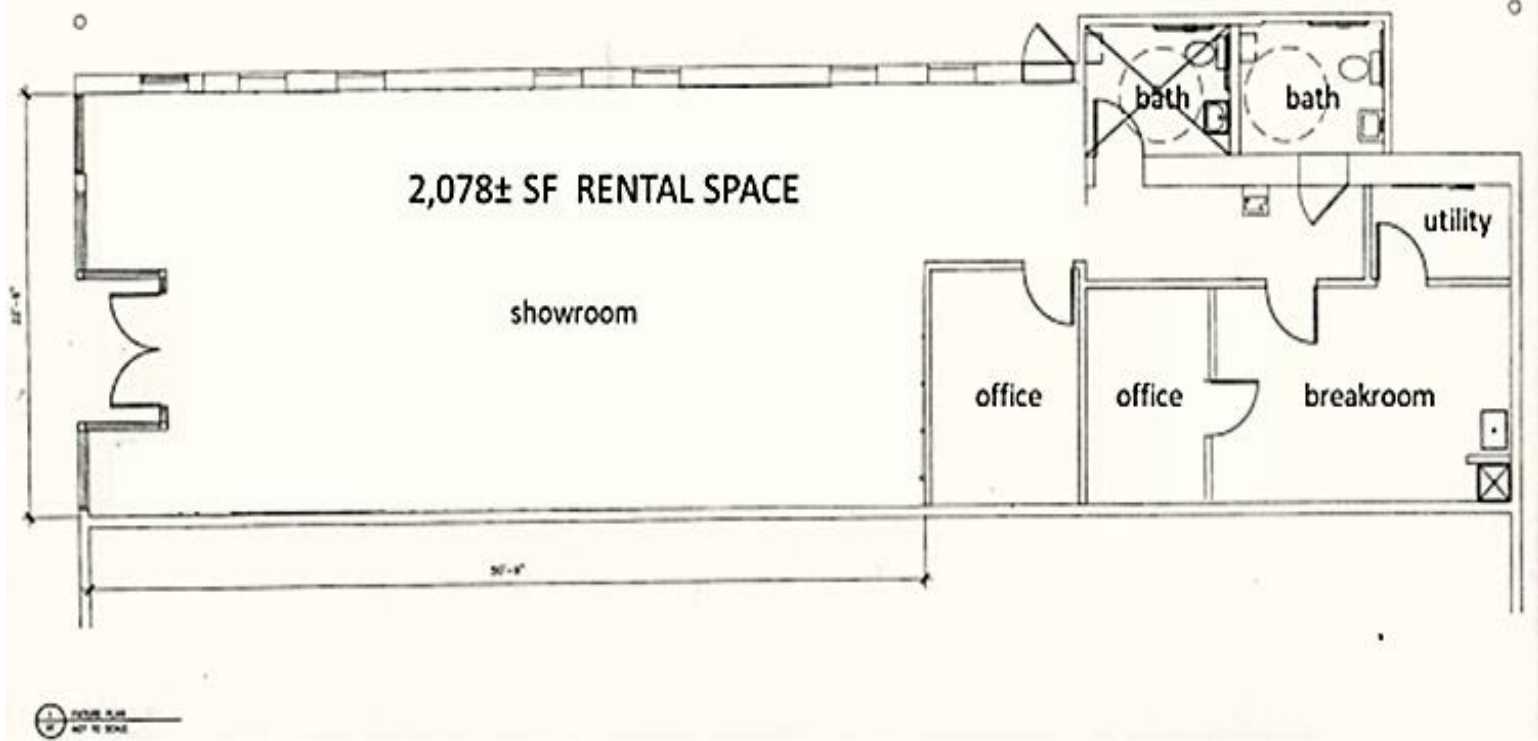
PaviaRealEstate.com
Main: 315.736.1555

FOR LEASE | RETAIL ENDCAP SPACE

3065 Erie Boulevard East, Syracuse NY 13224



COMMERCIAL REAL ESTATE SALES | LEASING | CONSULTING | DEVELOPMENT | MANAGEMENT



5 Oxford Road
New Hartford, New York 13413

151 Northern Concourse
Syracuse, New York 13221

PaviaRealEstate.com
Main: 315.736.1555

All information furnished, regarding property for sale, rental or financing is from sources deemed reliable, but no warranty or representation is made as to the accuracy thereof and same is submitted subject to errors, change of price, rental or conditions prior sale, lease or financing or withdrawal without notice

FOR LEASE | RETAIL ENDCAP SPACE

3065 Erie Boulevard East, Syracuse NY 13224



COMMERCIAL REAL ESTATE SALES | LEASING | CONSULTING | DEVELOPMENT | MANAGEMENT



Showroom



Laurence J. Socia, CLS
Licensed Associate Real Estate Broker
315.345.5600 mobile
lsocia@PaviaRealEstate.com



5 Oxford Road
New Hartford, New York 13413

151 Northern Concourse
Syracuse, New York 13221

PaviaRealEstate.com
Main: 315.736.1555