

# FOR SALE OR LEASE | COMMERCE PARK

NYS Route 12/Bradley Street and Lucas Drive, Pamela, New York



COMMERCIAL REAL ESTATE SALES | LEASING | CONSULTING | DEVELOPMENT | MANAGEMENT



## PROPERTY HIGHLIGHTS

Available: 8 Sites- NYS Build Ready sites ranging 3 to 12 acres

Parcel Size: 54 ± acres

Zoning: Light Industrial

Tax Parcel ID: 74.17-1-27.21

Sale Price: TBD

Lease Price: TBD

**Comments:** Bradley Commerce Park is a 54 ± acre commercial development by Watertown's premier developer. 8 sites available for build-to-suit, sale or lease. Fully served by public utilities. Located on Lucas Drive and Bradley Street/NYS Route 12 & adjacent to Interstate Route 81 at exit 47. Current businesses are United Parcel Service, Caprara Honda and soon Caprara Kia. Minutes from Downtown Watertown & Fort Drum. 30 minutes from the Canadian Border. Potential Rail sidings available.



**Patrick V. Agen**  
Licensed Associate Real Estate Broker  
315.736.1555 x 304  
[pvagen@PaviaRealEstate.com](mailto:pvagen@PaviaRealEstate.com)

**READY TO MAKE A DEAL? CLICK HERE NOW!**



5 Oxford Road  
New Hartford, New York 13413

151 Northern Concourse  
Syracuse, New York 13212

[PaviaRealEstate.com](http://PaviaRealEstate.com)  
MAIN: 315.736.1555

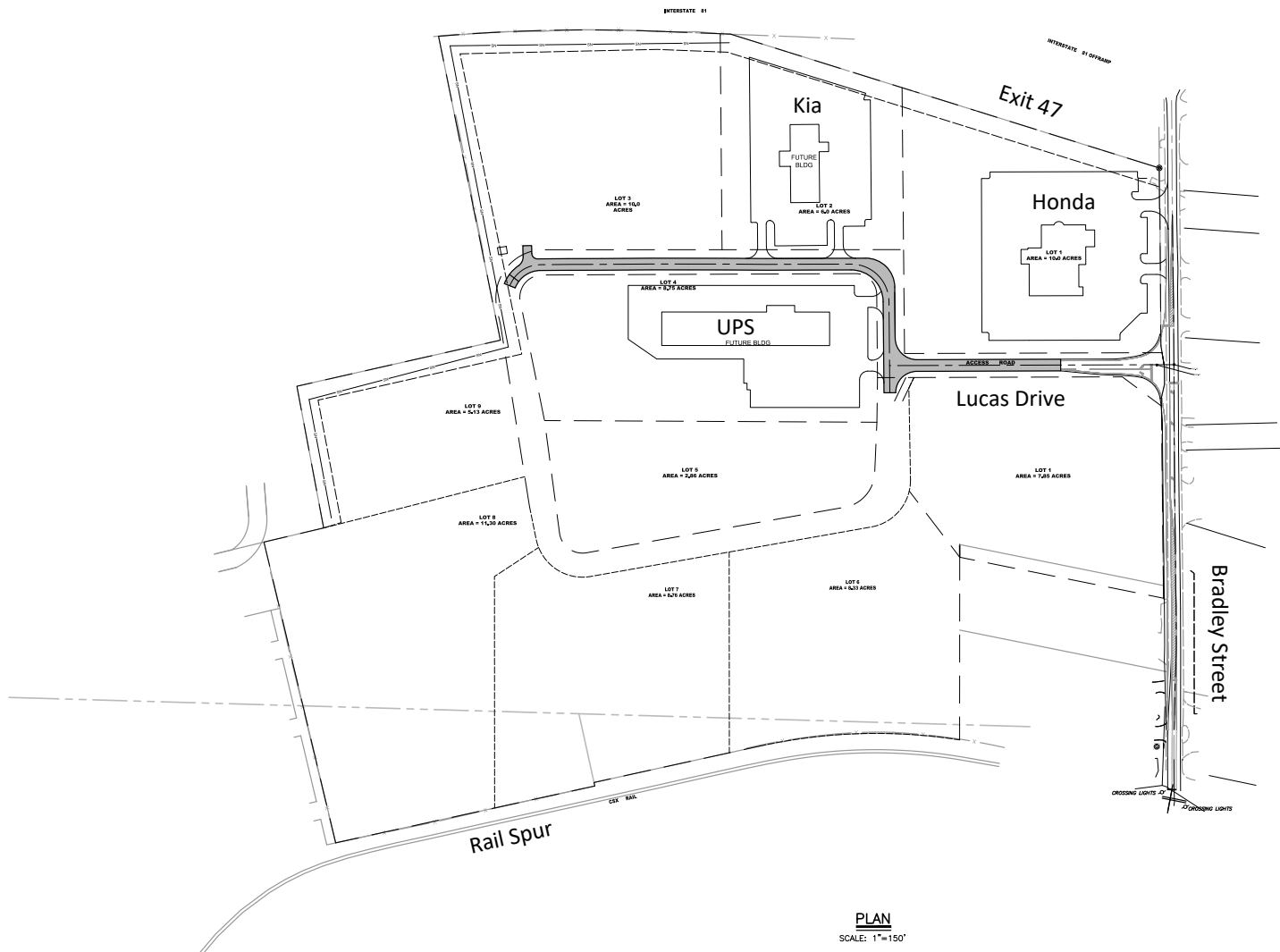
# FOR SALE OR LEASE | COMMERCE PARK

NYS Route 12/Bradley Street and Lucas Drive, Pamelia, New York



COMMERCIAL REAL ESTATE SALES | LEASING | CONSULTING | DEVELOPMENT | MANAGEMENT

## Interstate Route 81



5 Oxford Road  
New Hartford, New York 13413

151 Northern Concourse  
Syracuse, New York 13212

PaviaRealEstate.com  
MAIN: 315.736.1555