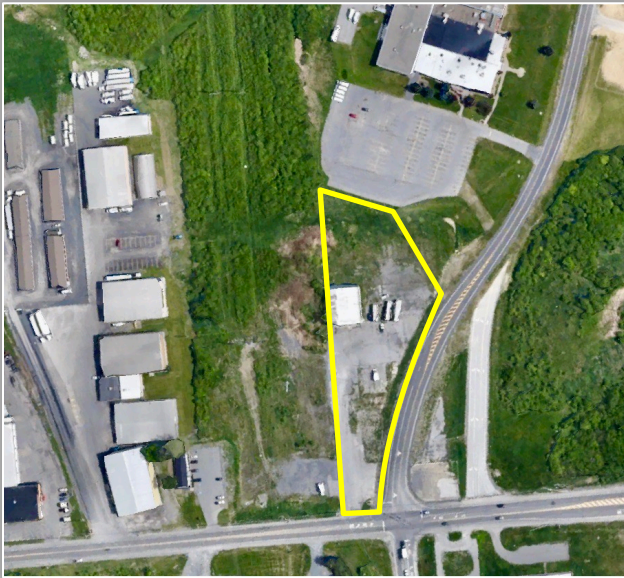


# FOR SALE | DEVELOPMENT OPPORTUNITY

21291 Route 12F, Watertown, New York



COMMERCIAL REAL ESTATE SALES | LEASING | CONSULTING | DEVELOPMENT | MANAGEMENT



## PROPERTY HIGHLIGHTS

Available: 4,672 ± SF Building on Development Site

Parcel Size: 2.87 ± acres

Zoning: Neighborhood Commercial

Tax Parcel ID: 82.08-1-2 / 73.20-1-24

Sale Price: \$1,475,000.00

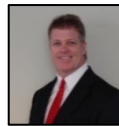
Taxes: \$3,542.00 ±

**Comments:** Development corner with great exposure on NYS Route 12F at Route 81, Exit 46. Signalized intersection at entrance to Jefferson County Industrial Park.

[READY TO MAKE A DEAL? CLICK HERE NOW!](#)



**Dominic Pavia, President**  
Licensed Real Estate Broker  
315.736.1555 x300 Office  
[Dpavia@PaviaRealEstate.com](mailto:Dpavia@PaviaRealEstate.com)



**Patrick V. Agen**  
Licensed Associate Real Estate Broker  
315.736.1555 x 304  
[pvagen@PaviaRealEstate.com](mailto:pvagen@PaviaRealEstate.com)



5 Oxford Road  
New Hartford, New York 13413

151 Northern Concourse  
Syracuse, New York 13212

[PaviaRealEstate.com](http://PaviaRealEstate.com)  
MAIN: 315.736.1555